

# SOLVED WITH

## PURPOSE & PLANNING

patheon

## Total transportation management for the life sciences industry

Patheon pharma services provides a unique and innovative service for clients seeking to partner with an experienced third party logistics provider for transportation, courier, import and customs decisions across their complete portfolio. Our Fisher Clinical Services<sup>SM</sup> Total Transportation Management service manages the complex supply chain processes required to move all types of life science shipments, including manufacturing API, IMP, comparator medication and ancillaries through to commercial goods, both internationally and within the country of destination.

Logistics specialists and our teams of in-country experts can simplify the complexity associated with transportation planning and monitoring and, as a result, optimize transportation performance and costs across the supply chain.

The transportation of life science shipments has become increasingly more complex over the years, with patient pools expanding, often to remote locations across the globe. In addition, the growth of biologics has added increased complexity to the supply chain due to cold chain handling, storage and distribution requirements across the supply chain.

Partnering with us can help you to:

- Optimize transportation spend
- Mitigate risk across the supply chain
- Access supply chain and local, in-country expertise
- Increase on-time performance & efficiencies

### Services include:



**Supplier qualification**



**Mode optimization**  
courier selection & management



**Customs & regulatory guidance & facilitation**



**Cold chain supplies management**  
including the reusable shipper program



**Dispatch services**



**Proactive track & trace**



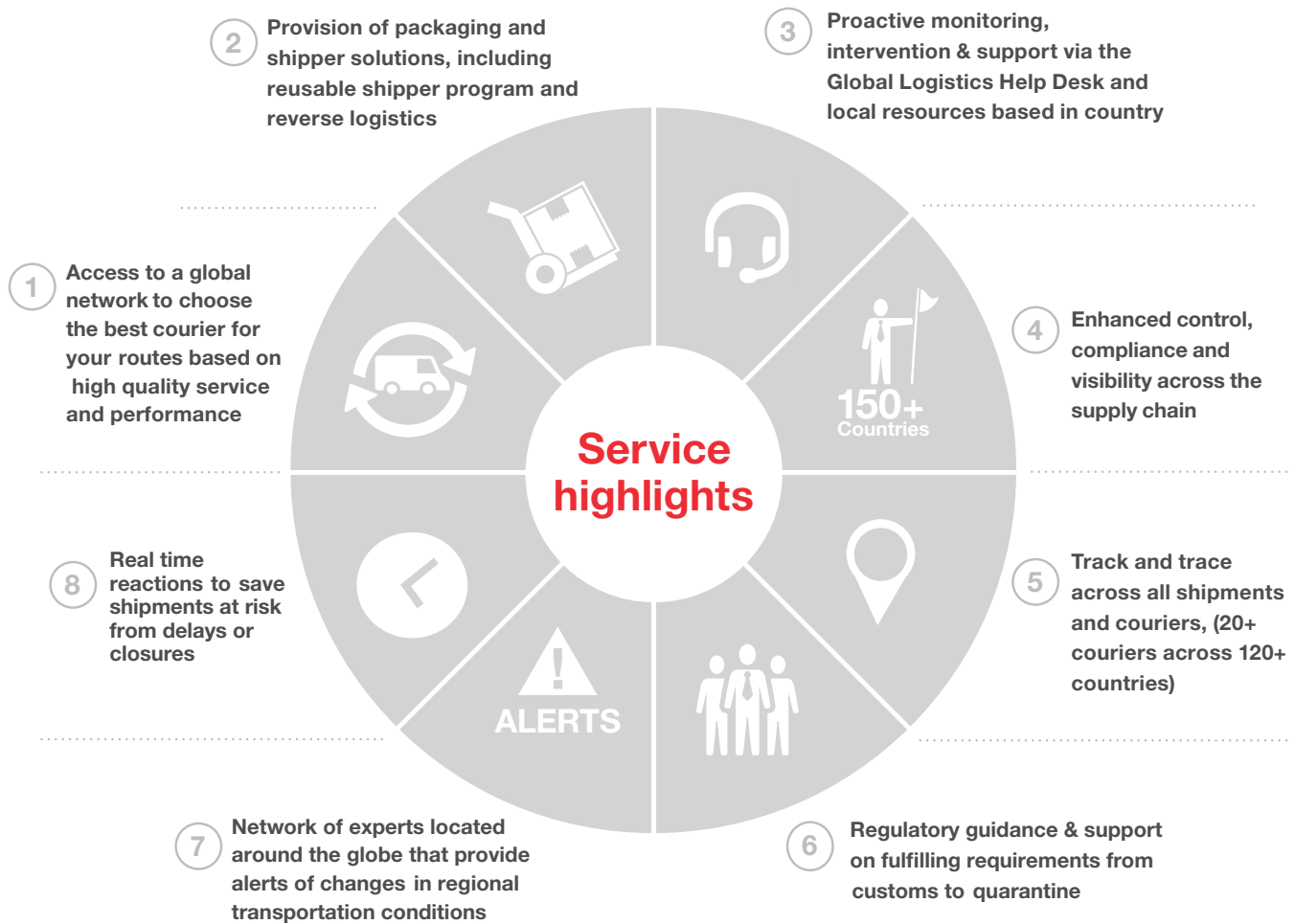
**Data objective monitoring & reporting**



**Consolidated billing**

# Providing assurance on all deliveries

Our unique transportation service offering has been designed to provide assurance that all products will get to their final destination on time and in full.



**Contact us**